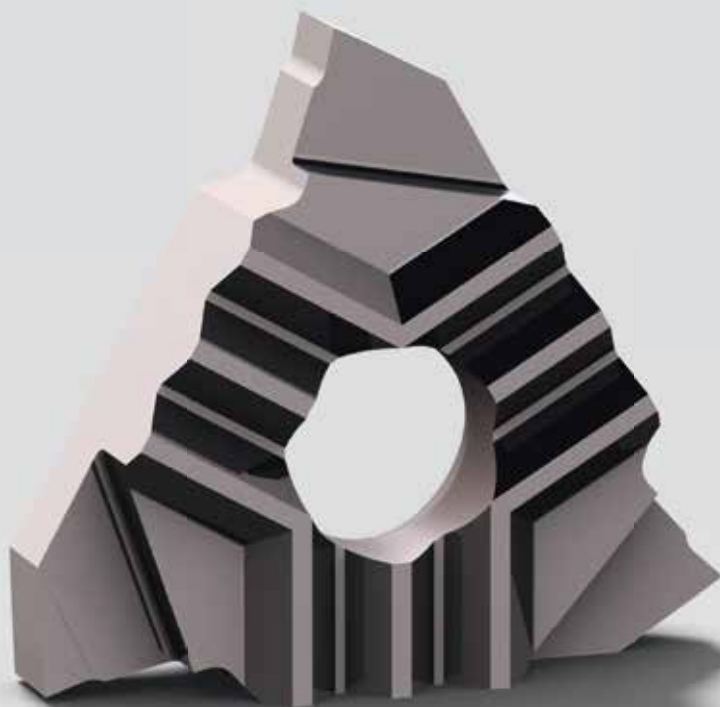


APPLITEC

TRIO-Line

2014



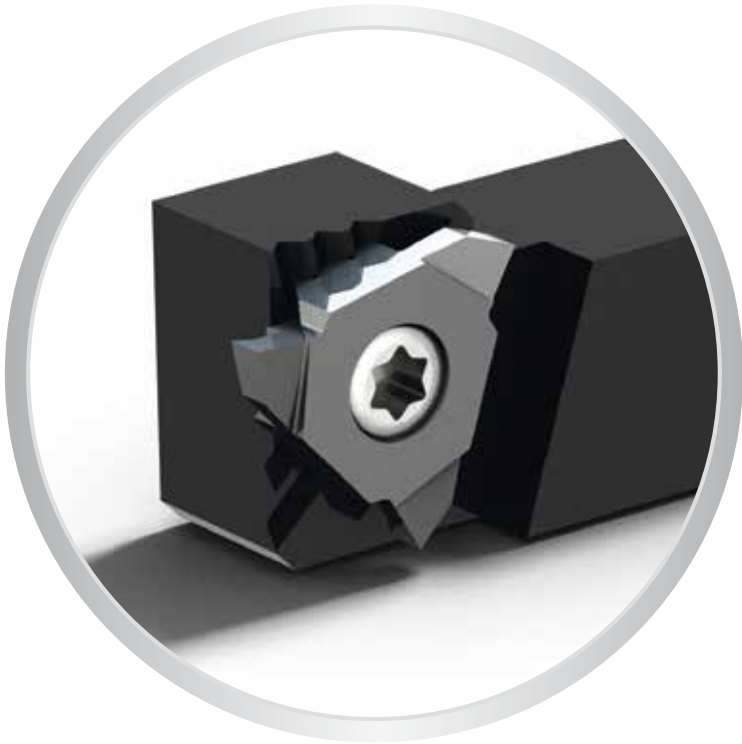
PERFORMANCE | PRECISION | RIGIDITY

Applitec Moutier S.A.
Ch. Nicolas-Junker 2
CH-2740 Moutier



APPLITEC
SWISS TOOLING

Tél. +41 32 494 60 20
Fax +41 32 493 42 60
www.applitec-tools.com



PERFORMANCE | PRECISION | RIGIDITY

Index

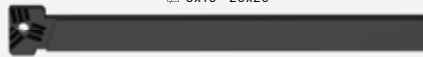
Accessoires
Zubehör
Accessories



> **5**

Supports
Halter
Holders

8x10 - 20x20

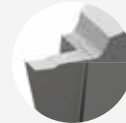


> **6**

GX

Gorge de précision
Präzisionseinstecken
High precision grooving

DIN6799
& DIN471



> **7**

FT

Tournage finition
Schlicht drehen
Fine turning



> **8**

GT

Foncer tourner
Einstecken und drehen
Grooving and turning



> **9**

GTX

Foncer tourner avec coupe positive
Einstecken und drehen mit positivem Spanwinkel
Grooving and turning with positive cut



> **10**

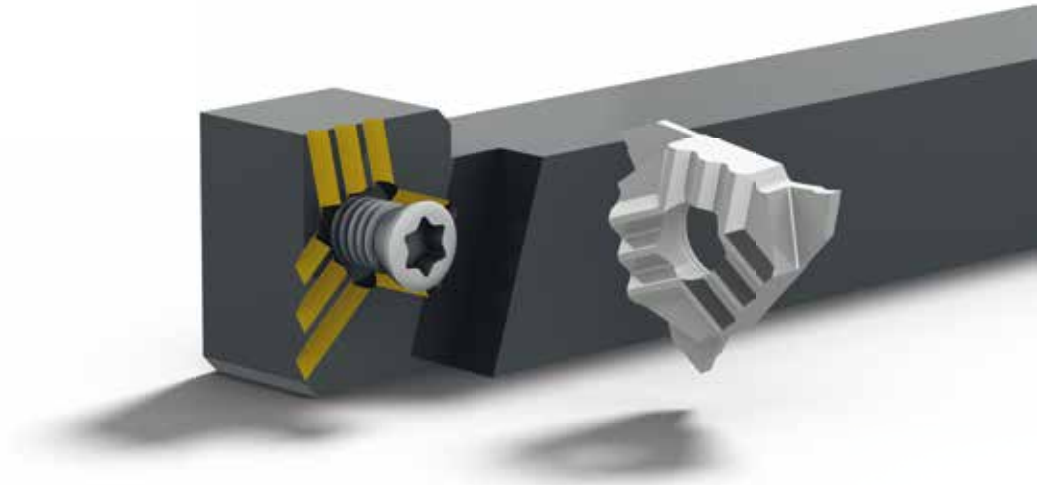
EP

Plaquette ébauche
Rohling
Blank insert



> **11**

Rigid clamping system with the famous Applitec teeth clamping



Nuance micro-grain à dureté élevée

Verschleissfeste Feinkornsorten

Wear resistant micro-grain grades

HN (μ K10)

non revêtu
unbeschichtet
uncoated

nuance micro-grain très résistante à l'usure
recommandé pour l'usinage du laiton, de l'aluminium
et du titane faiblement allié

verschleissfeste Feinkornsorte
empfehlenswert für die Bearbeitung von Messing und
niedrig legiertem Aluminium und Titan

wear resistant micro-grain grade
suitable for the machining of brass and low alloyed
aluminium and titanium

HTA

μ K10 + revêtement PVD
 μ K10 + PVD Beschichtung
 μ K10 + PVD coating

nuance très résistante à l'usure
pour l'usinage en finition dans des conditions
favorables des aciers, aciers inoxydables et
alliages de titane

sehr verschleissfeste Sorte
für die Feinbearbeitung von Stahl,
rostfreiem Stahl und Titanlegierungen bei guten
Bearbeitungsbedingungen

very wear resistant grade
for light machining of steel, stainless steel
and titanium alloys under favourable machining
conditions

Paramètres de coupe indicatifs

Empfohlene Schnittwerte

Standard machining data

Matière Werkstoff Material	Tournage Drehen Turning		Foncer Einstechen Grooving	
	VC (m/min)	F (mm/U)	VC (m/min)	F (mm/U)
Acier de décolletage Automatenstahl Free-cutting steel	120 - 200	0.01 - 0.20	80 - 150	0.01 - 0.15
Acier Stahl Steel < 600 N/mm ²	80 - 160	0.01 - 0.18	70 - 120	0.01 - 0.12
Acier Stahl Steel < 800 N/mm ²	60 - 120	0.01 - 0.15	60 - 100	0.01 - 0.10
Acier Stahl Steel < 800 N/mm ²	50 - 100	0.01 - 0.12	40 - 80	0.01 - 0.08
Acier inoxydable Rostfreistahl Stainless steel	60 - 120	0.01 - 0.15	60 - 100	0.01 - 0.08
Aluminium	180 - 800	0.01 - 0.30	150 - 300	0.01 - 0.20
Titane Titan Titanium	30 - 70	0.01 - 0.12	30 - 50	0.01 - 0.06
Cuivre, laiton, bronze Kupfer, Messing, Bronze Copper, brass, bronze	100 - 500	0.01 - 0.30	100 - 300	0.01 - 0.20

Accessoires

Zubehör

Accessories

Porte-outils Halter Holders			Option
T216-H...	V-M4x9-T15	T15	SET-NM-TX15

Recommendation de serrage
Drehmoment Empfehlung
Clamping recommendation

3.0 Nm



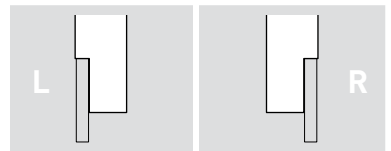
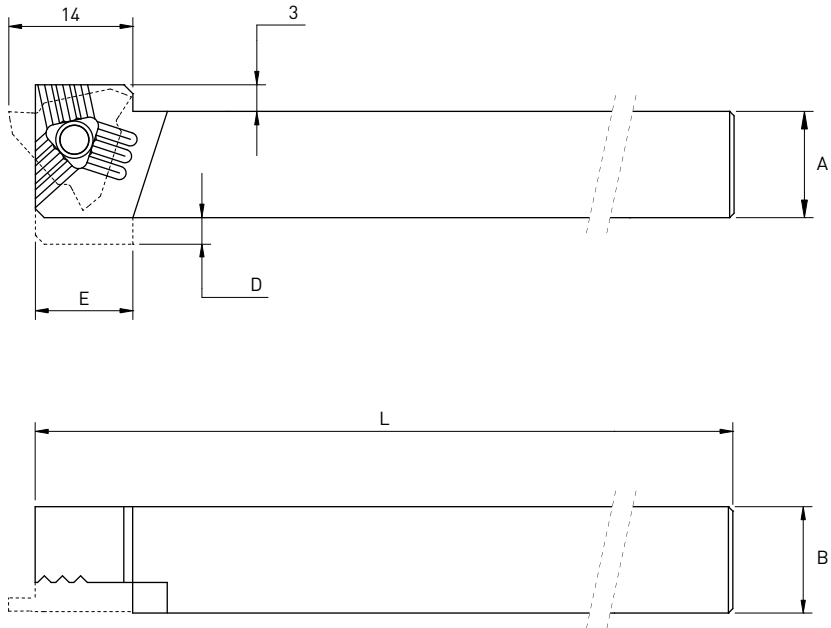
SET-NM-TX15

TRIO-Line

Porte-outils

Halter

Holder

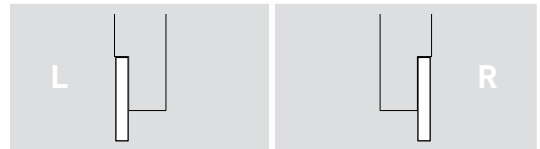
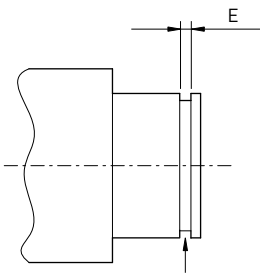
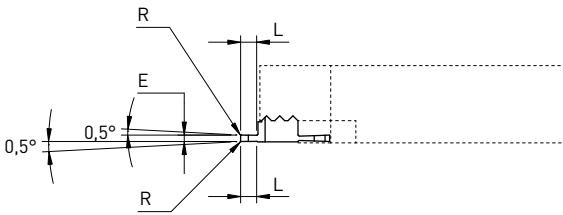
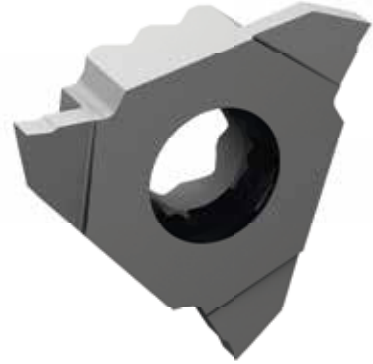
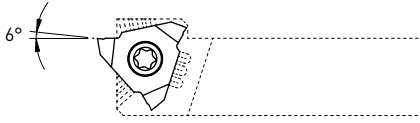


A	B	D	E	L	Art. N°	Art. N°
8	10	4	11	115	T216-H0810L	T216-H0810R
10	10	2	8	130	T216-H1010L	T216-H1010R
12	12	-	-	130	T216-H1212L	T216-H1212R
12	12	-	-	90	T216-H1212L-90	T216-H1212R-90
16	16	-	-	120	T216-H1616L	T216-H1616R
20	20	-	-	130	T216-H2020L	T216-H2020R

Plaquettes de gorge pour circlips

Einstechwendeplatte für Seegerring

Grooving inserts for retaining ring



selon DIN6799 et DIN471
gemäss DIN6799 und DIN471
according to DIN6799 and DIN471

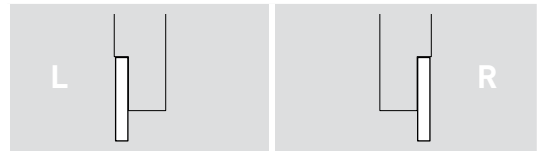
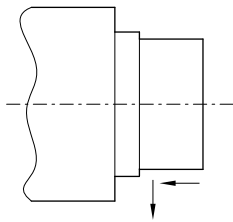
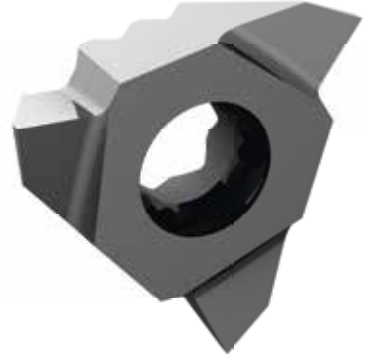
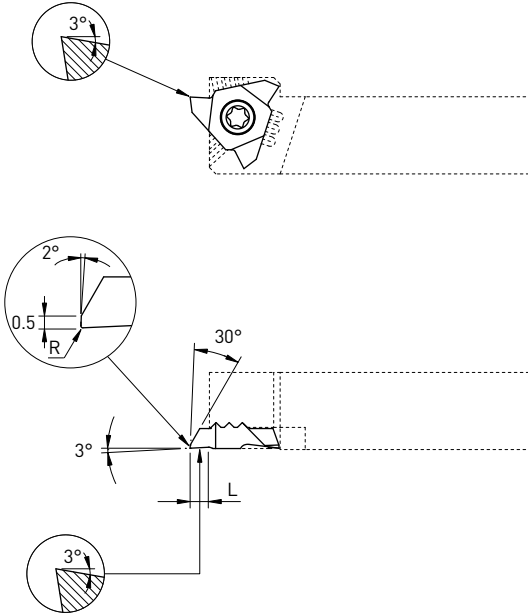


E ±0,01	L	R	L		R	
			Art. N°	HN HTA	Art. N°	HN HTA
0.26	0.8	0.03	T216L-GX026	■ ■	T216R-GX026	■ ■
0.36	0.8	0.03	T216L-GX036	■ ■	T216R-GX036	■ ■
0.46	0.8	0.03	T216L-GX046	■ ■	T216R-GX046	■ ■
0.50	1.5	0.03	T216L-GX050	■ ■	T216R-GX050	■ ■
0.57	1.5	0.03	T216L-GX057	■ ■	T216R-GX057	■ ■
0.67	1.5	0.03	T216L-GX067	■ ■	T216R-GX067	■ ■
0.77	2.0	0.03	T216L-GX077	■ ■	T216R-GX077	■ ■
0.87	2.0	0.03	T216L-GX087	■ ■	T216R-GX087	■ ■
0.97	2.5	0.03	T216L-GX097	■ ■	T216R-GX097	■ ■
1.00	2.5	0.03	T216L-GX100	■ ■	T216R-GX100	■ ■
1.10	2.5	0.03	T216L-GX110	■ ■	T216R-GX110	■ ■
1.20	2.5	0.03	T216L-GX120	■ ■	T216R-GX120	■ ■
1.30	2.5	0.03	T216L-GX130	■ ■	T216R-GX130	■ ■
1.50	2.5	0.03	T216L-GX150	■ ■	T216R-GX150	■ ■
1.60	2.5	0.03	T216L-GX160	■ ■	T216R-GX160	■ ■
1.85	2.5	0.03	T216L-GX185	■ ■	T216R-GX185	■ ■
2.00	2.5	0.03	T216L-GX200	■ ■	T216R-GX200	■ ■
2.50	2.5	0.03	T216L-GX250	■ ■	T216R-GX250	■ ■

TRIO-Line

Tournage avant
Vorwärts drehen
Front turning

FT

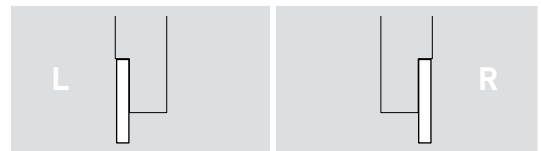
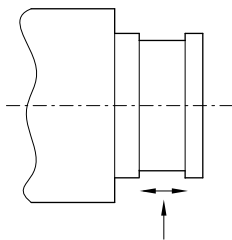
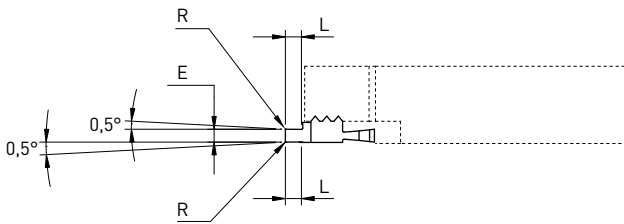
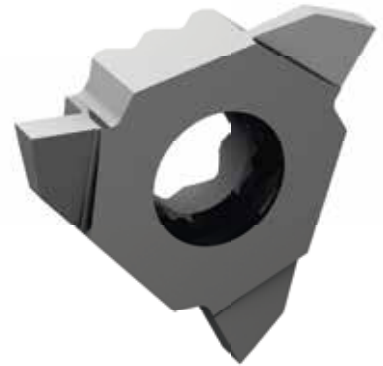
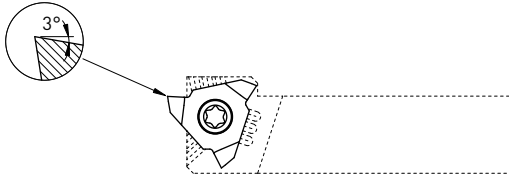


L	R	L		R			
		Art. N°	HN	HTA	Art. N°	HN	HTA
3.0	0.03	T216L-FT	■	■	T216R-FT	■	■
3.0	0.08	T216L-FT-R08	■	■	T216R-FT-R08	■	■

Foncer tourner

Einstecken und drehen

Grooving and turning



E	L	R	L			R		
			Art. N°	HN	HTA	Art. N°	HN	HTA
0.5	1.5	0.03	T216L-GT050	■	■	T216R-GT050	■	■
1.0	2.5	0.03	T216L-GT100	■	■	T216R-GT100	■	■
1.0	2.5	0.08	T216L-GT100-R08	■	■	T216R-GT100-R08	■	■
1.5	2.5	0.03	T216L-GT150	■	■	T216R-GT150	■	■
1.5	2.5	0.08	T216L-GT150-R08	■	■	T216R-GT150-R08	■	■
1.5	2.5	0.15	T216L-GT150-R15	■	■	T216R-GT150-R15	■	■
2.0	2.5	0.03	T216L-GT200	■	■	T216R-GT200	■	■
2.0	2.5	0.08	T216L-GT200-R08	■	■	T216R-GT200-R08	■	■
2.0	2.5	0.15	T216L-GT200-R15	■	■	T216R-GT200-R15	■	■
2.5	2.5	0.15	T216L-GT250-R15	■	■	T216R-GT250-R15	■	■

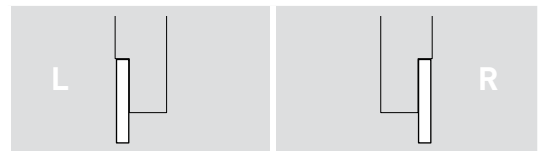
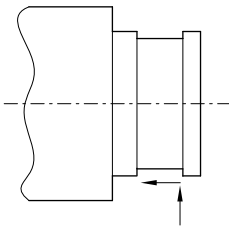
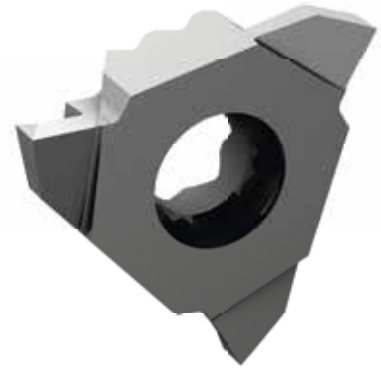
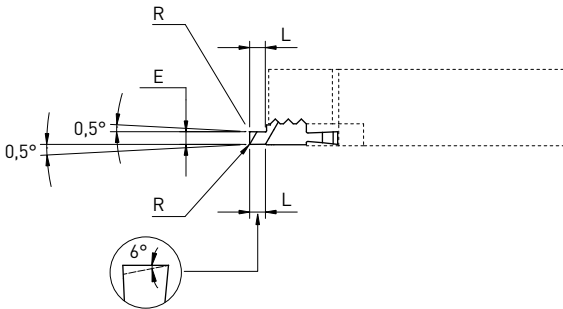
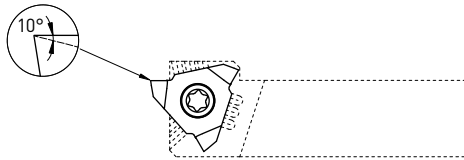
TRIO-Line

Foncer tourner

Einstecken und drehen

Grooving and turning

GTX



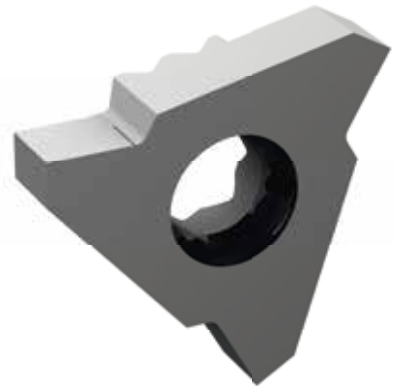
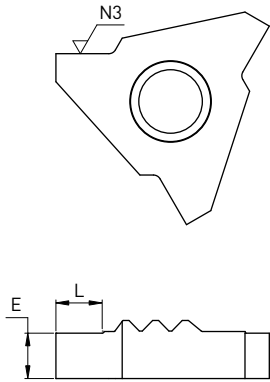
E	L	R	Art. N°	HN		Art. N°	HTA	
				■	■		■	■
1.0	2.5	0.03	T216L-GTX100	■	■	T216R-GTX100	■	■
1.0	2.5	0.08	T216L-GTX100-R08	■	■	T216R-GTX100-R08	■	■
1.5	2.5	0.03	T216L-GTX150	■	■	T216R-GTX150	■	■
1.5	2.5	0.08	T216L-GTX150-R08	■	■	T216R-GTX150-R08	■	■
1.5	2.5	0.15	T216L-GTX150-R15	■	■	T216R-GTX150-R15	■	■
2.0	2.5	0.03	T216L-GTX200	■	■	T216R-GTX200	■	■
2.0	2.5	0.08	T216L-GTX200-R08	■	■	T216R-GTX200-R08	■	■
2.0	2.5	0.15	T216L-GTX200-R15	■	■	T216R-GTX200-R15	■	■
2.5	2.5	0.15	T216L-GTX250-R15	■	■	T216R-GTX250-R15	■	■

Plaquette ébauche

VHM-Rohlinge

Blank insert

EP



		L		R			
E	L	Art. N°	HN	HTA	Art. N°	HN	HTA
~3	3	T216L-EP	■		T216R-EP	■	

PERFORMANCE | PRECISION | RIGIDITY



SWISS MADE



APPLITEC
SWISS TOOLING

Applitec Moutier S.A.
Ch. Nicolas-Junker 2
CH-2740 Moutier

Tél. +41 32 494 60 20
Fax +41 32 493 42 60
www.applitec-tools.com